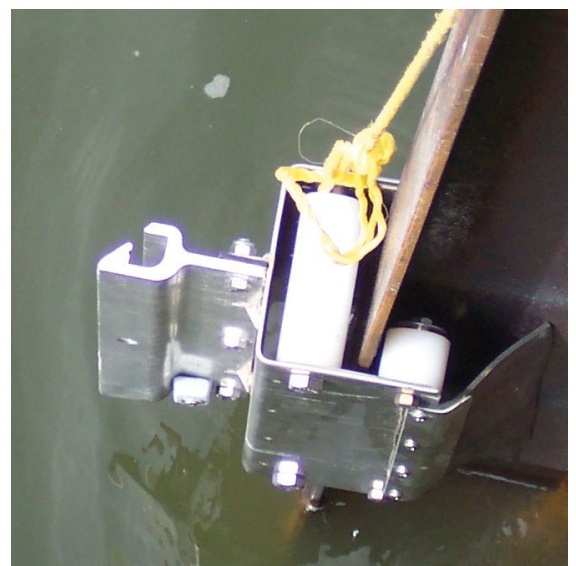
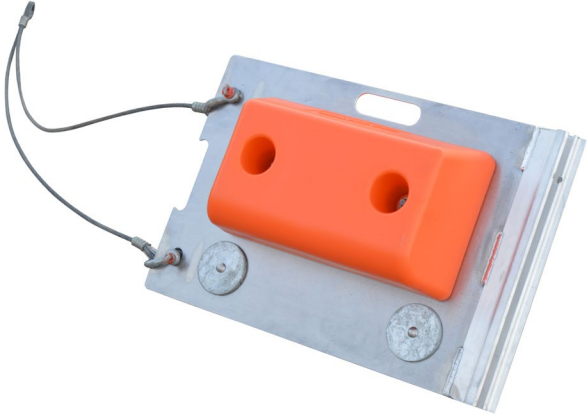


ELASTEC

# Boom Accessories



## Boom Towing



### **Paravane**

A Paravane is used when towing boom to keep the leading section of boom afloat and upright. It features two floats, ASTM connector, steel frame and anodes.



### **Tow Bridle with Bullet Float**

The Tow Bridle with Bullet Float features an ASTM connector and foam float to assist with boom towing and provides buoyancy to keep the bridle from sinking if it were ever dropped in the water during operation.

---

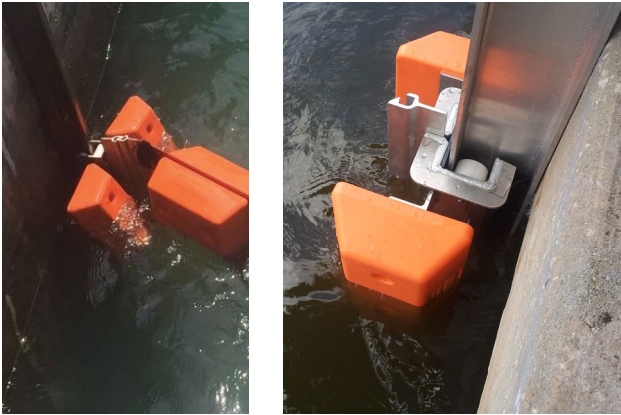
## Boom Deflector



### **Boom Deflector**

A floating device that assists fast water boom deployment by maintaining the boom in a deflection mode. The Boom Deflector is fitted with ASTM boom connectors, float, and Deflector Wing with connecting pin and adjustable wing with a support arm.

# Tidal Compensators



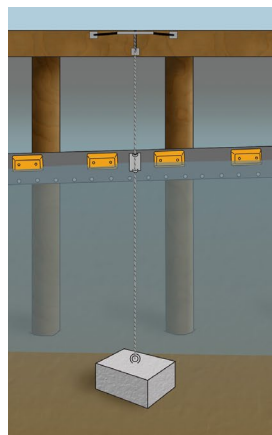
## Tidal Compensator

The Tidal Compensator is a mechanism that can be used to fix floating oil booms to vertical structures such as docks, pilings or piers. It is available in Stainless Steel or Marine Grade Aluminum and is comprised of rollers, floats and boom connector that will fit over a standard I Beam (2 3/4" or 4"). Once attached, the Tidal Compensator will ride up and down with the changing water levels.



## Pile Slider

The Elastec Pile Slider is a buoy that will fit around a regular circular pile and provide a mooring point for oil containment boom. On each side of the Pile Slider is a Universal Boom Connector capable of receiving containment boom of various sizes. The pile slider is available in two sizes to fit around a 6 inch or 12 inch diameter pile.



## CABLE GUIDE 24 INCH

The cable guide clamps over a 24 inch tall Permence boom (or similar), it has two pivoting blocks and that clamp around a vertical cable (suspended from a jetty or pier for example), allowing the boom to slide up and down. The cable guide helps keep the boom in the desired location and avoid rubbing on hard surfaces etc.

# Connectors



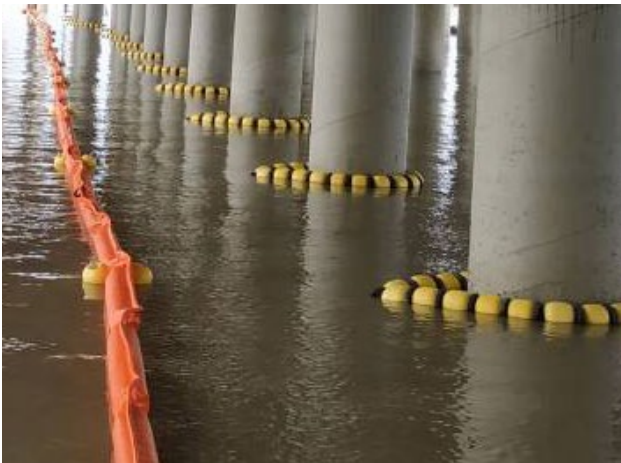
## Magnetic Hull Connector

The Elastec Magnetic Boom Connector is used to couple a small floating oil containment boom to the hull of a ship or other flat metal surfaces. These Magnetic connectors are suitable for booms up to 24 inches overall, and will form an oil-tight seal.

These connectors have powerful magnets on one side and industry standard ASTM Slide connector (Z type on request) on the other. An over center handle at the top of the connector facilitates removal / release from the hull. Offered with either 4 or 6 magnets. Models may be ordered with a buoy to prevent loss during handling.

4 magnets - 900 lb / 408 kg of force

6 magnets - 1350 lb / 600 kg of force



## Boom Tether System

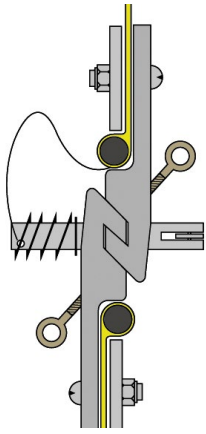
The ELASTEC BOOM TETHER SYSTEM is used for securing floating booms and barriers to a jetty or pier. The Tether can be attached to piles from of 12, 18, 24 and 36 inch diameter (30, 45, 60 and 90cm).



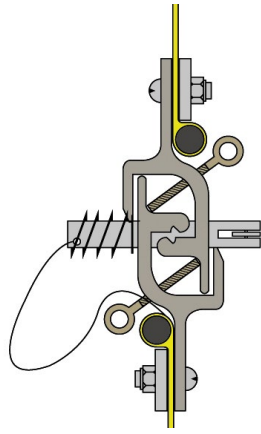
## T Connector and Y Connector

ELASTEC T and Y connectors facilitate the coupling of floating oil boom sections, allowing the formation of different booming configurations.

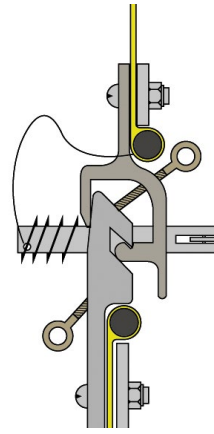
## Universal Boom Connectors



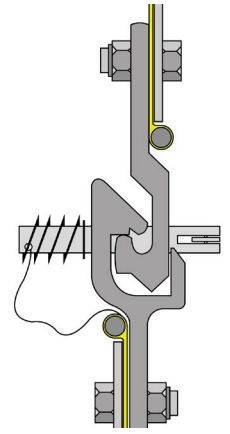
"Z" Connector  
to  
"Z" Connector



Universal Slide (Mini)  
Connector  
to Universal Slide (Mini)  
Connector

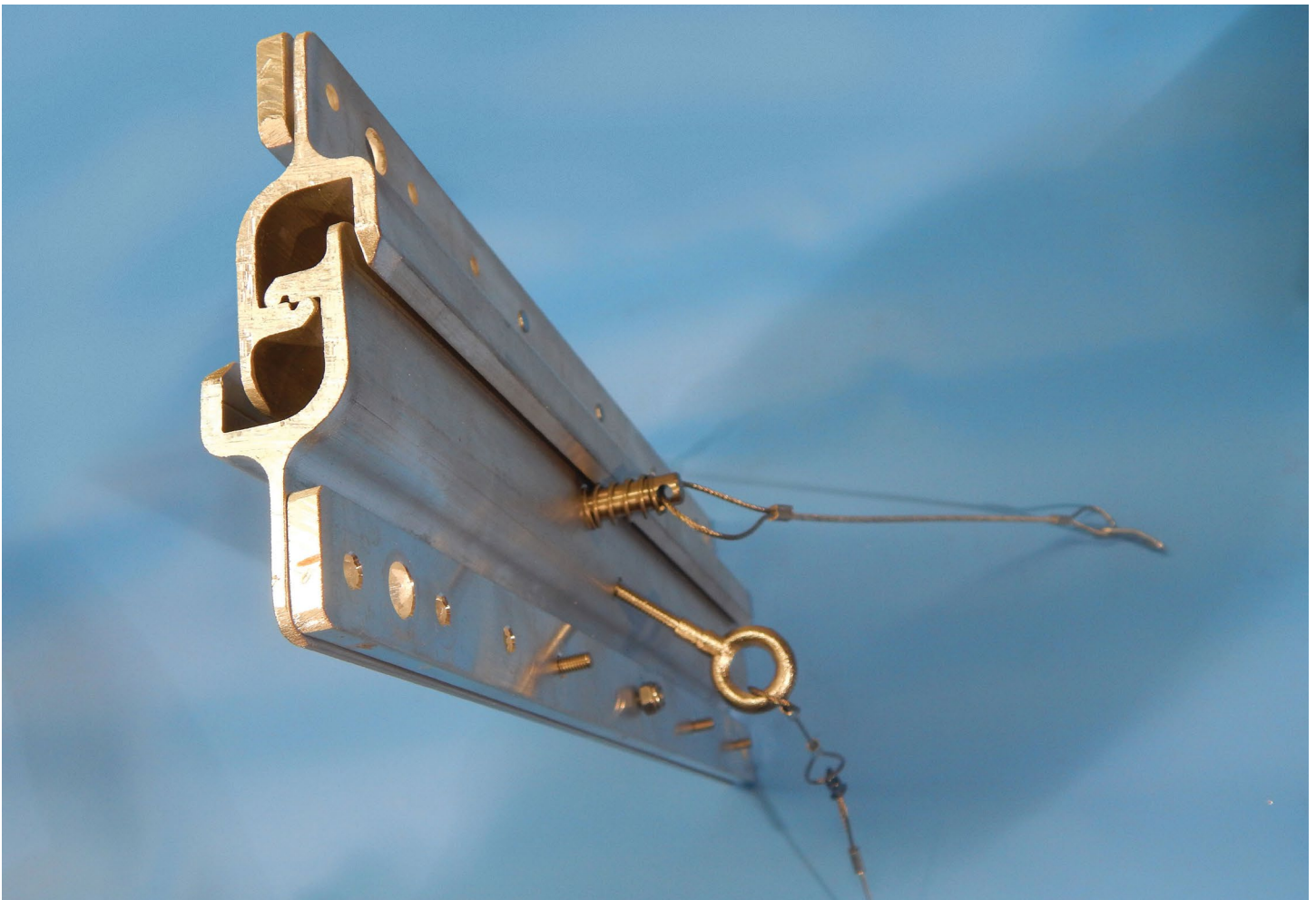


Universal Slide (Mini) Connector  
to  
"Z" Connector



Unicon Connector  
to  
Universal Slide (Bulk)  
Connector

Elastec booms can be supplied with a choice of connectors for rapid coupling of sections. As standard, our booms are fitted with left handed Universal Slide type connectors that comply with ASTM standard F2438. The Universal Slide connector design will accommodate other connectors with the same orientation. We can also supply " Z " connectors that conform to ASTM F962. Note this is an old standard and has been superseded by F2438



# Demarcation

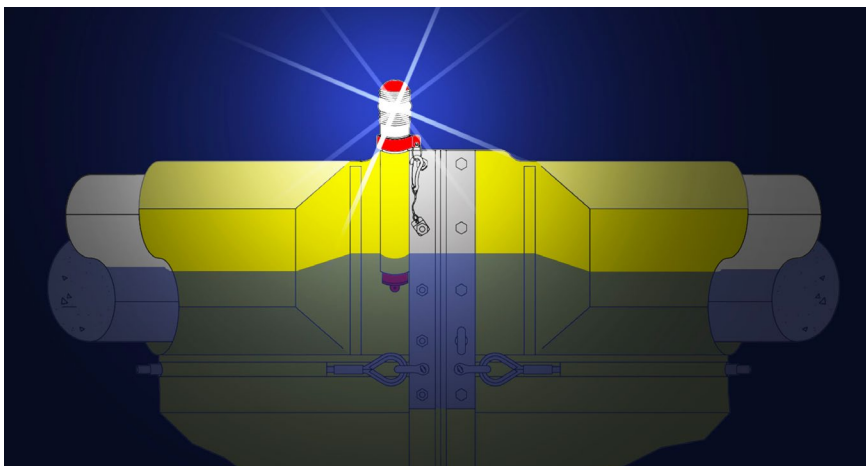
## Solar Marker Buoy

This buoy features a 15 lb (6.8 kg) shell and 62 inch (157 cm) total height and 32 inch (81 cm) freeboard. Customizable warning available.



## Floating Light Marker Buoy

A floating, flashing marker light designed for use with floating structures such as booms and turbidity curtains. Built of durable PVC material it weighs 5 lbs (2.2 kg) with overall height of 31 inches (78 cm) and 16 inches (40 cm) exposed above the water line. The light is operated by two D cell batteries with a transistorized blinking switch. Controlled by a photo cell that turns the light on at dusk and off at dawn. A loop of cable is provided for attaching to boom etc. Clear bulb.

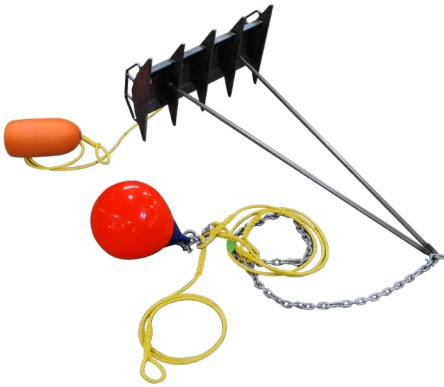


## Boom Light

The Boom Light maintains a steady burn for up to 1.5 months of continuous battery use. It only turns on in darkness and is powered by three D-cell batteries.

U.S. Coast Guard Compliant - Complies with USCG Rule 88.15 for dredge pipeline applications, USCG Rule 24 for towing or pushing and USCG Rule 22.

# Anchor Systems



## Rock Rake

The ELASTEC Rock Rake anchor is optimal for fast moving rivers with rocky bottoms. Instead of “skipping” across the bed, it digs itself in and uses the rock as extra weight.



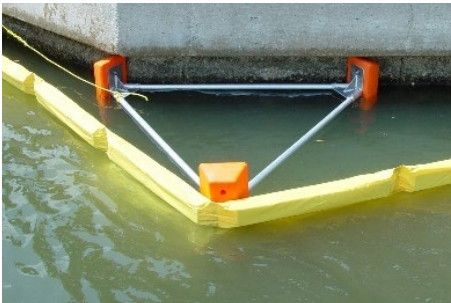
## Danforth

Elastec manufactures multiple sizes of Danforth anchor systems to suit your deployment scenario.



## TerraTwist

This system is designed to facilitate anchoring to shorelines where there is an absence of naturally occurring mooring points. These anchors can be used with soil, sand and asphalt.



## Boom Standoff

The Elastec Boom Standoff unit is used to keep oil containment boom away from the hull of a ship or to hold the boom off a dock area. The unit will reduce wear on the floating oil boom by holding it away from abrasive surfaces (quay wall, vessel hull etc).



## Grapple Hook

This custom built grapple hook features a four hook head, adjustable float to set the hook depth and nylon throwing rope. The hook can be easily disassembled to be stored flat in tight spaces.



## Boom Repair Kit

Elastec can provide Boom Repair Kits for most styles of containment boom. The kits include fabric appropriate for your style of boom and all the tools needed to make repairs to damaged boom.



1309 West Main St.  
Carmi, Illinois 62821, USA  
+1 (618) 382-2525  
www.elastec.com    elastec@elastec.com